

**VILLAGE OF WINDSOR  
VILLAGE BOARD RESOLUTION 2024-88**

**RESOLUTION AUTHORIZING THE INSTALLATION OF CROSSWALK SIGNALS ON THE NORTH SIDE  
OF THE PEDERSON CROSSING REARDON ROAD INTERSECTION**

**WHEREAS**, the Windsor Village Board has a high regard for the safety of those pedestrians that walk along and cross Village streets; and

**WHEREAS**, the Public Works Department and the Village of Windsor Deputies have indicated their support for a crosswalk and lighted pedestrian crosswalk signals on Pederson Crossing, at the designated location on Exhibit A; and

**WHEREAS**, the Public Safety Committee has reviewed and recommends approval of the installation of a crosswalk and lighted pedestrian crosswalk signals on Pederson Crossing, at the designated location on Exhibit A; and

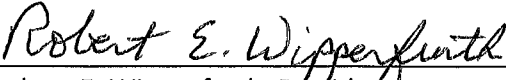
**WHEREAS**, the Village Board finds the crosswalk and lighted pedestrian crosswalk signals will enhance the safety of those pedestrians crossing at this crosswalk and thereby supports the improvements; and

**WHEREAS**, the Village Board recommends using unassigned fund balance to complete the improvement.

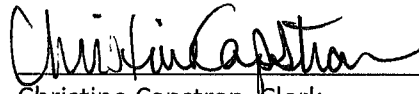
**NOW THEREFORE, BE IT RESOLVED**, by the Village Board of the Village of Windsor that it hereby approves the painting of a crosswalk, in the location shown on Exhibit A, and approves the installation of lighted pedestrian crosswalk signals, as shown in Exhibit B paid with through the use of Village of Windsor unassigned fund balance.

The above and foregoing Resolution was duly adopted at a regular meeting of the Village Board of the Village of Windsor on November 7, 2024, by a vote of 5 in favor and 0 opposed.

**VILLAGE OF WINDSOR**

  
\_\_\_\_\_  
Robert E. Wipperfurth, President

**Attested by:**

A handwritten signature in black ink that reads "Christine Capstran". The signature is written in a cursive style with a horizontal line underneath the name.

Christine Capstran, Clerk

**Incorporated by Reference:**

Exhibit A: Memorandum from Public Works Director dated June 11, 2019

Exhibit B: R920-E Brochure

Exhibit C: Quote



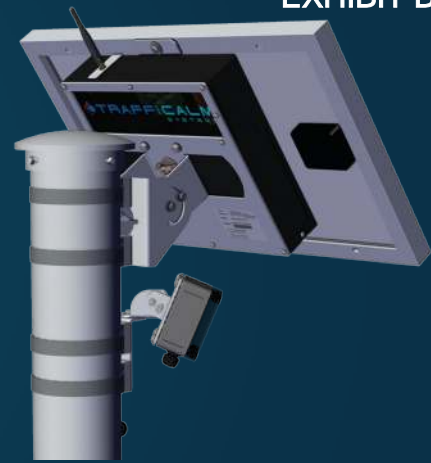
Staff recommends consideration of a lighted pedestrian crossing on north side of entrance to Windsor Community Park. Park is heavily used by residents and businesses on the west side of Pederson Crossing and this would allow a safer crossing to the park facilities. Cost of signs could be covered through Traffic Impact West Funds.

Close up of proposed area



# RRFB

## FLASHING SIGN SYSTEM



According to the NHTSA, 6,205 pedestrians were killed in traffic crashes in 2019.

TraffiCalm is working with the industry to reduce the number of crashes at mid-block crossings where typical signage is an insufficient countermeasure. By using unprecedented LED illuminated signs and RRFB enhancements, agencies across the world are seeing justifiable gains in pedestrian safety.

### FHWA Interim Approval 21 states...

- The Office of Transportation Operations reviewed the available data in 2008 and considered the RRFB to be highly successful for the applications tested (uncontrolled marked crosswalks). The RRFB offers significant potential safety and cost benefits because it achieves high rates of compliance at a low relative cost in comparison to other more restrictive devices

## FEATURES

### HUMAN INTERFACE

Easily make all configuration changes through TC Connect™, a WiFi connected platform developed by TrafficCalm™ that requires NO Internet Connection! With any browser enabled device, an Installer can easily log in and select from multiple options and settings including Flash Duration, LED Brightness and Dimming Control. Also, activation data is easily retrieved right to any Wi-Fi device.

### DURABILITY AND RELIABILITY

Roadside signage and the like, attract all forms of vandalism. Through our multi-string LED Configuration design and permanently sealed electronics, our RRFB will maintain MUTCD standards for brightness even if 1 or 2 vertical LED strings are damaged through vandalism.

### POWER SOURCES

**SOLAR:** Utilizing a standard 20 watt panel, or up to a 60 watt upgrade, the collected power from these efficient panels is stored in a standard 12Ah Absorbent Glass Matt (AGM) Battery; a proven cost effective solution. **AC:** Integrated AC inverter provides direct connection to 120-220VAC.

TRAFFICCALM.COM



Compatible with most  
Push-Button Systems



## SPECIFICATIONS

### ■ P2C CONTROLLERS & COLLABORTORS

Permanently and Environmentally Sealed Electronics

Compact and lightweight aluminum enclosure

Weight: under 30 lbs including battery

Mounted behind solar panels

### ■ SOLAR POWER

20W Solar Panel (standard) with up to 150 Watt configurations available

### ■ VISUAL

MUTCD and FHWA Compliant

80 Amber 590nm LEDs for Redundancy and Uniform Light Distribution

Side-mounted LEDs for pedestrian side visual confirmation

Exceeds SAE J595 Class 1 Intensity

Auto Dimming

Meets SAE J578 for chromaticity

### ■ BATTERY

12 to 97 Ah Absorbent Glass Mat (AGM)

Accessible Batteries, easily replaceable in Field

Extreme climate batteries available

## DETAILS

### ■ HUMAN INTERFACE

WiFi Connectivity - No Internet Connection required

Configurable Flash Duration

Automatic Unique Channel Selection

Wirelessly configures all devices on network

Activation Data Report

Auto and configurable dimming

### ■ RRFB PHYSICAL CONSTRUCTION

Each of the 80 LEDs have built-in 15 degree UV resistant lens

Mounting brackets accommodate back-to-back mounting

Horizontal aiming adjustment

Dimensions: 24"W x 4.183"H x .85"D (60.96 x 10.63 x 2.16 cm)

### ■ PERFORMANCE

Rated for 800, 30 second activations per day with 2 hours sunlight for continuous operation

12 AH ~5.5 days of 800, 30 second activations without solar panel

Wireless activation within 100 mS

Wireless range of 2000'

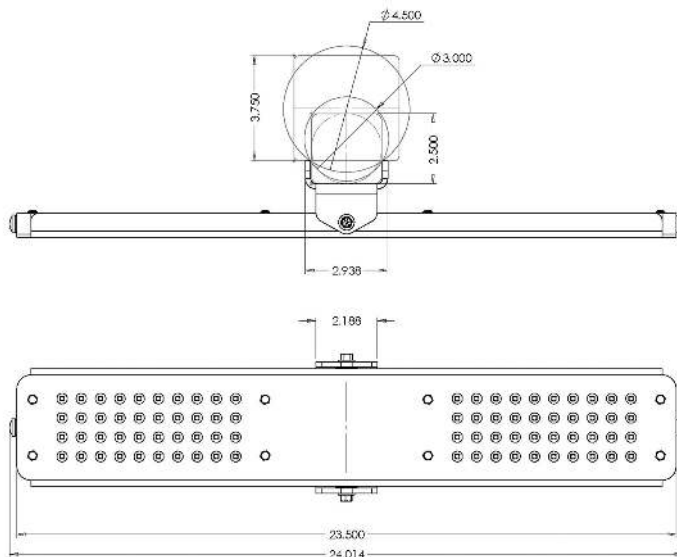
5 year warranty on all electronic components, including battery

Potted and sealed electronics, connections, and cables- IP-67 Rated.

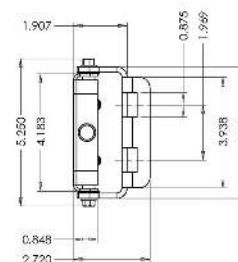
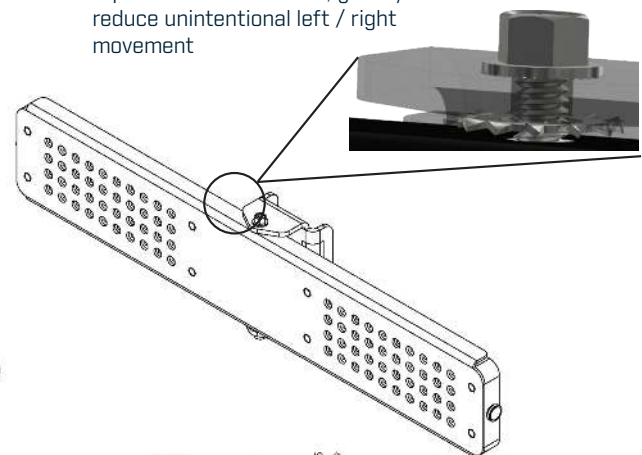


Wi-Fi Connection made Easy through TC Connect™

## DIMENSIONS



Anti-Rotational Star Washers at top and bottom of RRFB, greatly reduce unintentional left / right movement



Decker Supply Co Inc.  
 1115 O'Neill Ave  
 PO Box 8008  
 Madison WI 53708

# QUOTATION

Quote Number: 483081  
 Quote Date: 07/24/24  
 Page: 1  
 Customer Phone: 608 235-1196  
 Customer Fax: 608-846-2328

**B  
I  
L  
L**

VILLAGE OF WINDSOR  
 4084 MUELLER RD  
 DEFOREST, WI 53532

**S  
H  
I  
P**

VILLAGE OF WINDSOR  
 4084 MUELLER RD  
 DEFOREST, WI 53532  
 608-235-1196  
 ATTN: DAVIS CLARK

Entered By: JOSH  
 Location:  
 Account Cd: WINDSTWIDN  
 Salesperson: 7250

RFQ Number:  
 Ship Via: PICK UP  
 Taxable: Y  
 Pmt Terms: NET 30

Line	Order Qty	Part Number	Description	Price	UM	Ext Price	Est Ship
1	1.00	M75-SA300-CTL3	30 WATT SOLAR POWERED INTELLIGENT SIGN CONTROLLER (ALL FLASH, P2C, CHEVRON, OR CONFLICT INTERSECTION) - COMMUNICATES & COMMANDS TC COLLABORATORS, WI-FI & MESH NET COMMUNICATION - INCLUDES 30W SOLAR PANEL	\$1,250.0000	EA	\$1,250.00	07/24/24
2	1.00	M75-SA300-CLB3	30W SOLAR POWERED COLLABORATOR COMMUNICATES & COMMANDED BY TC CONTROLLER, MESH NET COMMUNICATION, NO WI-FI - INCLUDES 30W SOLAR PANEL	\$1,151.0000	EA	\$1,151.00	07/24/24
3	2.00	M75-SQTOP-0000	SQUARE TOP POLE MOUNT, TRUE SOUTH AIM, FOR TRAFFIC CALM SOLAR PANEL CONTROLLERS & COLLABORATORS	\$108.0000	EA	\$216.00	07/24/24
4	4.00	M75-SA328-0000	TRAFFIC CALM RECTANGULAR RAPID FLASHING BEACON, AMBER LED'S, WITH BLACK ALUMINUM HOUSING	\$631.4500	EA	\$2,525.80	07/24/24
5	2.00	M75-BDL34-0000	BDL3-Y BULLDOG III PUSHBUTTON W/PBF9X12-X PB FRAME(YEL), AND 9 X 12 "PUSH BUTTON TO TURN ON WARNING LIGHTS" SIGN	\$357.1500	EA	\$714.30	07/24/24

- PICK UP  
 - SALESPERSON: JOSH

Decker Supply Co Inc.  
1115 O'Neill Ave  
PO Box 8008  
Madison WI 53708

# QUOTATION

Quote Number: 483081  
Quote Date: 07/24/24  
Page: 2  
Customer Phone: 608 235-1196  
Customer Fax: 608-846-2328

**B**  
**I**  
**L**  
**L**

VILLAGE OF WINDSOR  
4084 MUELLER RD  
DEFOREST, WI 53532

**S**  
**H**  
**I**  
**P**

VILLAGE OF WINDSOR  
4084 MUELLER RD  
DEFOREST, WI 53532  
608-235-1196

ATTN: DAVIS CLARK

Entered By: JOSH  
Location:  
Account Cd: WINDSTWIDN  
Salesperson: 7250

RFQ Number:  
Ship Via: PICK UP  
Taxable: Y  
Pmt Terms: NET 30

Line	Order Qty	Part Number	Description	Price	UM	Ext Price	Est Ship
------	-----------	-------------	-------------	-------	----	-----------	----------

Thank you for the opportunity  
of quoting.

Prices are good for 45 days  
from quotation date.

Subtotal: \$5,857.10  
Sales Tax: \$0.00  
Freight: \$0.00  
Total: \$5,857.10